

MISCELLANEOUS INFORMATION

PERIMETER:-	84'
SURFACE AREA:	469 SQ FT
VOLUME:	13938 IMP GALS 63416 L

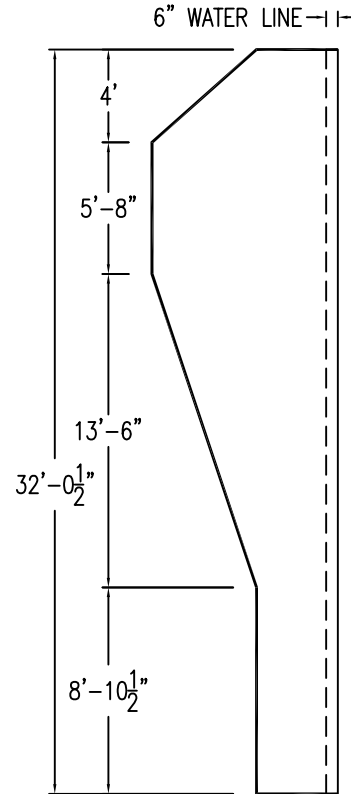
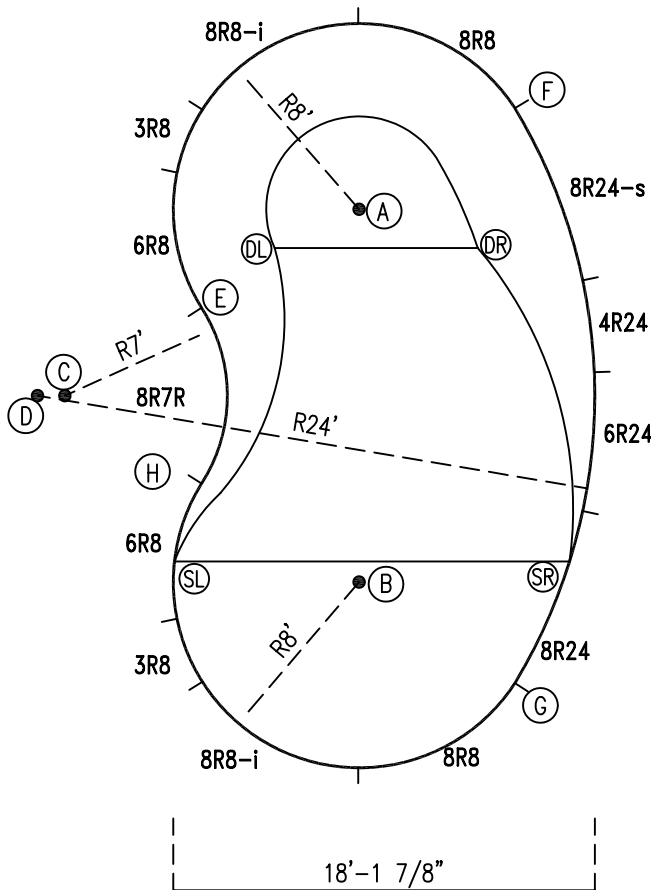
CONCRETE DECK INFO

WIDTH	AREA	NET INCREASES FOR:			
		STEPS	DIVING	SLIDE	ROLLER
2"	181	13	27	24	10
2'6"	230	17	31	20	10
3'	281	20	36	16	10

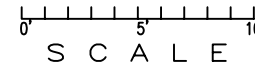
All Figures Represent "Sq Ft"

PARTS LIST

CODE	QTY	DESCRIPTION
8R24-s	1	8' Skimmer x 24' Radius
8R8-i	2	8' Return x 8' Radius
8R8	2	8' Plain x 8' Radius
6R8	2	6' Plain x 8' Radius
3R8	2	3' Plain x 8' Radius
8R24	1	8' Plain x 24' Radius
6R24	1	6' Plain x 24' Radius
4R24	1	4' Plain x 24' Radius
8R7R	1	8' Plain x 7' Reverse Radius
AF	13	A-Frame
S	26	Stake
NB	78	Nuts & Bolts



*ALL DIMENSIONS ARE FINISHED



INSTALLATION DATA

From Point "A" to:-		From Point "B" to:-	
B	16'-0 5/8"	B	
C	15'-0"	C	15'-0"
D	16'-0 1/8"	D	16'-0 1/8"
E	8'-0"	E	13'-7 1/2"
F	8'-0"	F	21'-5 3/4"
G	21'-5 3/4"	G	8'-0"
H	13'-7 1/2"	H	8'-0"
SL	17'-1 1/2"	SL	8'-0"
SR	17'-8"	SR	9'-1 1/4"
DL	4'-0"	DL	14'-10"
DR	5'-4 1/2"	DR	15'-3 1/4"

NOTICE

SWIMMING POOLS AND ACCESSORIES (INCLUDING DIVING BOARDS) ARE DANGEROUS WHEN IMPROPERLY USED OR INSTALLED. IT IS THE RESPONSIBILITY OF MUNICIPAL OFFICIALS, BUILDERS AND POOL OWNERS TO ADHERE TO ALL SAFETY RECOMMENDATIONS AND STANDARDS ISSUED BY THE POOL & HOT TUB COUNCIL, LOCAL AUTHORITIES AND EQUIPMENT MANUFACTURERS. PLEASE REFER TO DIVING BOARD MANUFACTURERS FOR CORRECT POSITIONING AND INSTALLATION OF DIVING EQUIPMENT.

AQUAPRO

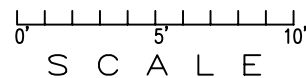
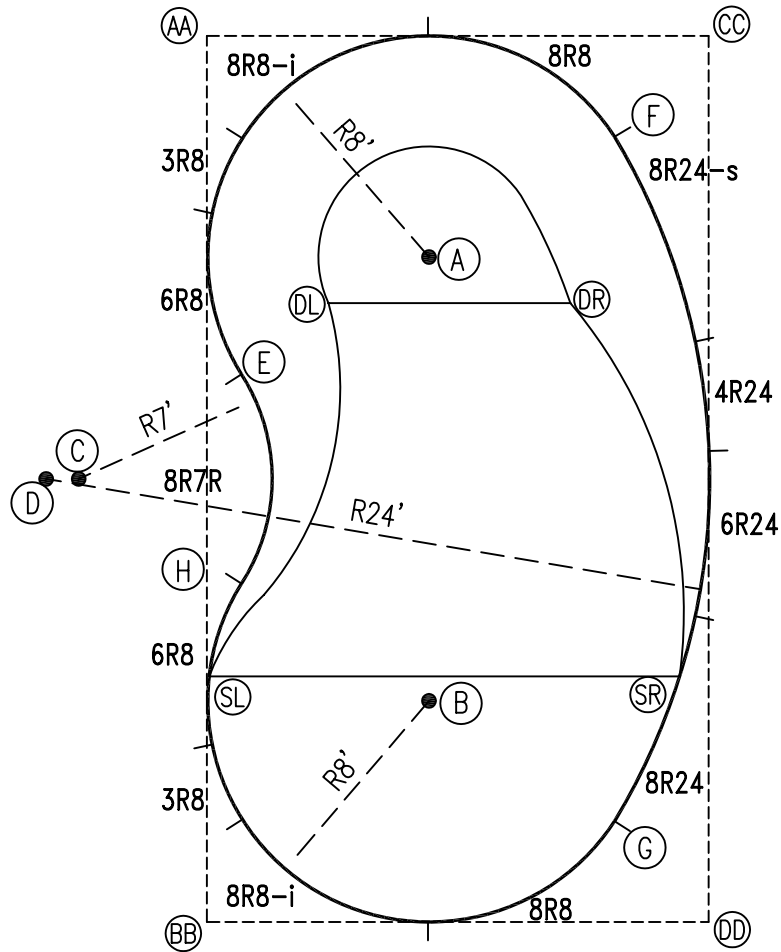
KIDNEY-CRESCENT-LEFT 16x18'2x32

DRAWING REFERENCE #
14-16-32-1

DRAWN BY: JB
REV. 30 NOV 2006
SHEET 1 OF 2

EXTERNAL INSTALLATION DATA

AA TO:	BB TO:	CC TO:	DD TO:
AA ---	AA 32'-0 5/8"	AA 18'-1 7/8"	AA 36'-10"
BB ---	BB ---	BB 36'-10"	BB 18'-1 7/8"
CC ---	CC ---	CC ---	CC 32'-0 5/8"
A 11'-4 1/8"	A 25'-4 1/4"	A 12'-10 3/4"	A 26'-1 1/8"
B 25'-4 1/4"	B 11'-4 1/8"	B 26'-1 1/8"	B 12'-10 3/4"
C 16'-8 1/4"	C 16'-8 1/4"	C 27'-10 1/4"	C 27'-10 1/4"
D 17'-0 5/8"	D 17'-0 5/8"	D 28'-9 7/8"	D 28'-9 7/8"
E 12'-3 5/8"	E 19'-10 1/4"	E 20'-10 3/8"	E 26'-0 1/2"
F 15'-2 1/4"	F 32'-0"	F 4'-11 7/8"	F 28'-7 1/4"
G 32'-0"	G 15'-2 1/4"	G 28'-7 1/4"	G 4'-11 7/8"
H 19'-10 1/4"	H 12'-3 5/8"	H 26'-0 1/2"	H 20'-10 3/8"
SL 23'-2"	SL 8'-10 5/8"	SL 29'-4 1/2"	SL 20'-1 5/8"
SR 28'-9 1/2"	SR 19'-3 1/4"	SR 23'-2 1/4"	SR 8'-11 3/8"
DL 10'-7 1/2"	DL 22'-9 3/4"	DL 16'-9 3/4"	DL 26'-3 1/4"
DR 16'-3 7/8"	DR 25'-11 1/2"	DR 10'-10 5/8"	DR 22'-11 1/4"



DIAGONALS

F To H:	21'1"
E To G:	21'1"

NOTICE

SWIMMING POOLS AND ACCESSORIES (INCLUDING DIVING BOARDS) ARE DANGEROUS WHEN IMPROPERLY USED OR INSTALLED. IT IS THE RESPONSIBILITY OF MUNICIPAL OFFICIALS, BUILDERS AND POOL OWNERS TO ADHERE TO ALL SAFETY RECOMMENDATIONS AND STANDARDS ISSUED BY THE POOL & HOT TUB COUNCIL, LOCAL AUTHORITIES AND EQUIPMENT MANUFACTURERS. PLEASE REFER TO DIVING BOARD MANUFACTURERS FOR CORRECT POSITIONING AND INSTALLATION OF DIVING EQUIPMENT.

AQUAPRO

KIDNEY-CRESCENT-LEFT 16x18'2x32

DRAWING REFERENCE #

14-16-32-1

DRAWN BY: JB

REV. 30 NOV 2006

SHEET 2 OF 2