

MISCELLANEOUS INFORMATION

PERIMETER:-	73'
SURFACE AREA:	355.8 SQ FT
VOLUME:	10612 IMP GALS 48283 L

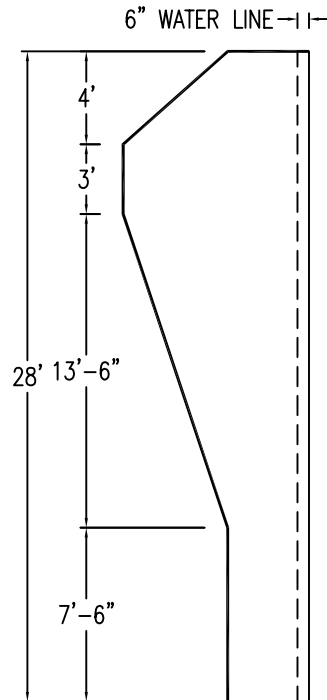
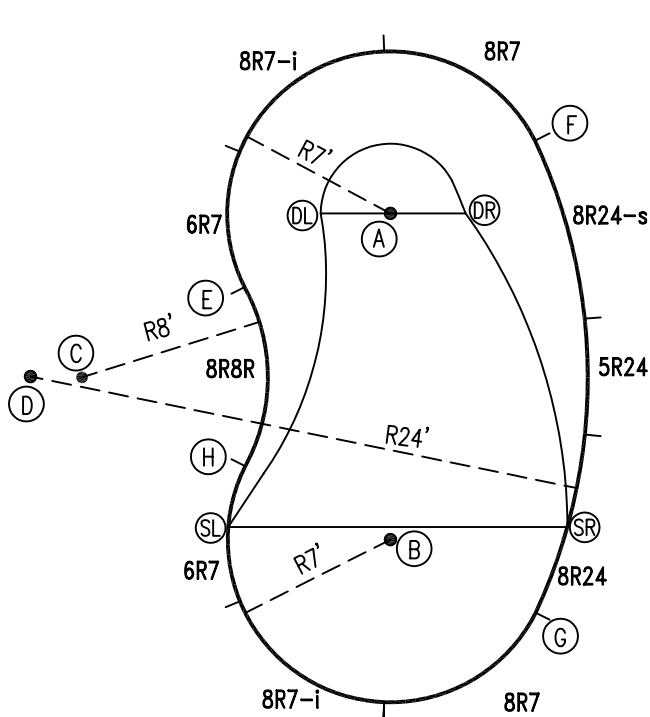
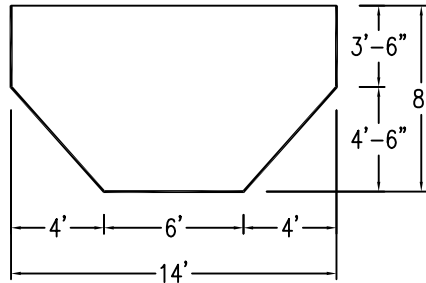
PARTS LIST

CODE	QTY	DESCRIPTION
8R24-s	1	8' Skimmer x 24' Radius
8R7-i	2	8' Return x 7' Radius
8R7	2	8' Plain x 7' Radius
6R7	2	6' Plain x 7' Radius
8R24	1	8' Plain x 24' Radius
5R24	1	5' Plain x 24' Radius
8R8R	1	8' Plain x 8' Reverse Radius
AF	10	A-Frame
S	20	Stake
NB	60	Nuts & Bolts

CONCRETE DECK INFO

WIDTH	AREA	NET INCREASES FOR:			
		STEPS	DIVING	SLIDE	ROLLER
2'	159	13	27	24	10
2'6"	203	17	31	20	10
3'	248	20	36	16	10

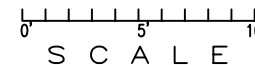
All Figures Represent "Sq Ft"



INSTALLATION DATA

From Point "A" to:-		From Point "B" to:-	
B	14'-0 1/2"	B	
C	15'-0"	C	15'-0"
D	17'-0"	D	17'-0"
E	7'-0"	E	12'-6 5/8"
F	7'-0"	F	18'-3 1/2"
G	18'-3 1/2"	G	7'-0"
H	12'-6 5/8"	H	7'-0"
SL	15'-2 3/8"	SL	7'-0"
SR	15'-6"	SR	7'-7 5/8"
DL	3'-0"	DL	14'-4 1/4"
DR	3'-2 7/8"	DR	14'-4 7/8"

\*ALL DIMENSIONS ARE FINISHED



NOTICE

SWIMMING POOLS AND ACCESSORIES (INCLUDING DIVING BOARDS) ARE DANGEROUS WHEN IMPROPERLY USED OR INSTALLED. IT IS THE RESPONSIBILITY OF MUNICIPAL OFFICIALS, BUILDERS AND POOL OWNERS TO ADHERE TO ALL SAFETY RECOMMENDATIONS AND STANDARDS ISSUED BY THE POOL & HOT TUB COUNCIL, LOCAL AUTHORITIES AND EQUIPMENT MANUFACTURERS. PLEASE REFER TO DIVING BOARD MANUFACTURERS FOR CORRECT POSITIONING AND INSTALLATION OF DIVING EQUIPMENT.

AQUAPRO

KIDNEY-CRESCENT-LEFT 14x15'6x28

DRAWING REFERENCE #  
14-14-28-1

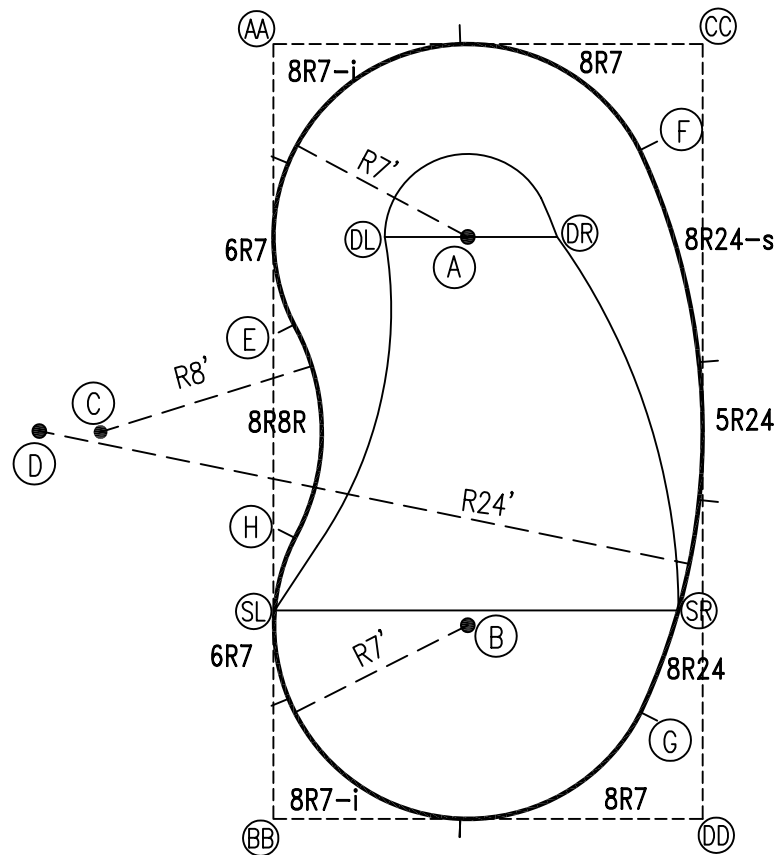
DRAWN BY: JB  
REV. 25 NOV 08  
SHEET 1 OF 2

### EXTERNAL INSTALLATION DATA

AA TO:	BB TO:	CC TO:	DD TO:
AA ---	AA 28'-0 1/8"	AA 15'-6 1/4"	AA 32'-0 1/4"
BB ---	BB ---	BB 32'-0 1/4"	BB 15'-6 1/4"
CC ---	CC ---	CC ---	CC 28'-0 1/8"
A 9'-10 3/4"	A 22'-2 1/8"	A 10'-11 7/8"	A 22'-8 1/4"
B 22'-1 7/8"	B 9'-11"	B 22'-7 7/8"	B 11'-0 1/8"
C 15'-4 1/4"	C 15'-3 3/4"	C 25'-10 3/4"	C 25'-10 1/2"
D 16'-4 1/4"	D 16'-4 1/2"	D 27'-9 1/8"	D 27'-9 3/8"
E 10'-1 7/8"	E 17'-10 3/4"	E 17'-10 5/8"	E 23'-2 1/8"
F 13'-9 3/4"	F 27'-6 5/8"	F 4'-5 3/4"	F 24'-3"
G 27'-7 1/8"	G 13'-9 1/2"	G 24'-3 5/8"	G 4'-5 1/8"
H 17'-9 7/8"	H 10'-2 3/4"	H 23'-1 3/8"	H 17'-10 7/8"
SL 20'-5 5/8"	SL 7'-6 1/2"	SL 25'-7 7/8"	SL 17'-2 1/2"
SR 25'-2"	SR 16'-5 5/8"	SR 20'-5 7/8"	SR 7'-7 1/8"
DL 8'-0 5/8"	DL 21'-5"	DL 13'-5 1/4"	DL 23'-11 5/8"
DR 12'-4 7/8"	DR 23'-4 7/8"	DR 8'-8 3/4"	DR 21'-8 1/4"

### DIAGONALS

F To H:	18'8"
E To G:	18'9"



0' 5' 10'  
SCALE

### NOTICE

SWIMMING POOLS AND ACCESSORIES (INCLUDING DIVING BOARDS) ARE DANGEROUS WHEN IMPROPERLY USED OR INSTALLED. IT IS THE RESPONSIBILITY OF MUNICIPAL OFFICIALS, BUILDERS AND POOL OWNERS TO ADHERE TO ALL SAFETY RECOMMENDATIONS AND STANDARDS ISSUED BY THE POOL & HOT TUB COUNCIL, LOCAL AUTHORITIES AND EQUIPMENT MANUFACTURERS. PLEASE REFER TO DIVING BOARD MANUFACTURERS FOR CORRECT POSITIONING AND INSTALLATION OF DIVING EQUIPMENT.

**AQUAPRO**

KIDNEY-CRESCENT-LEFT 14x15'6x28

DRAWING REFERENCE #

14-14-28-1

DRAWN BY: JB

REV. 25 NOV 08

SHEET 2 OF 2