

MISCELLANEOUS INFORMATION

PERIMETER:-	63'6"
SURFACE AREA:	237.5 SQ FT
VOLUME:	5847 IMP GALS 26603 L

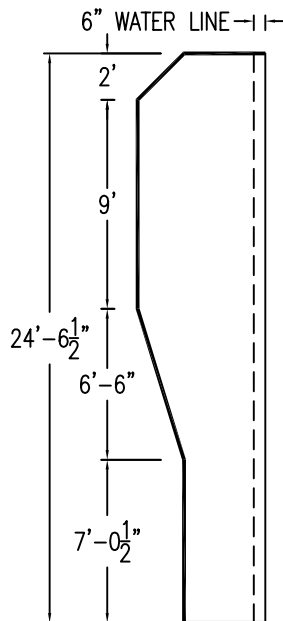
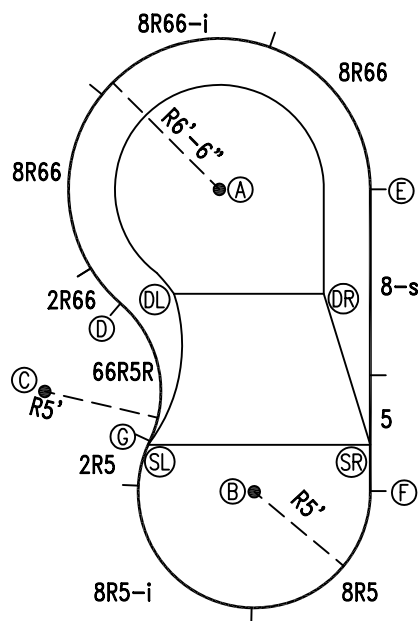
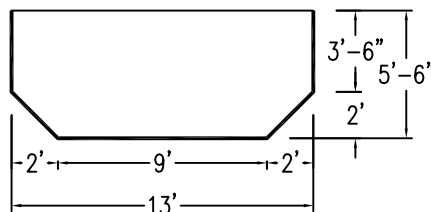
PARTS LIST

CODE	QTY	DESCRIPTION
8-s	1	8' Skimmer
8R66-i	1	8' Return x 6'6" Radius
8R5-i	1	8' Return x 5' Radius
5	1	5' Panel
8R66	2	8' Panel x 6'6" Radius
2R66	1	2' Panel x 6'6" Radius
8R5	1	8' Panel x 5' Radius
2R5	1	2' Panel x 5' Radius
66R5R	1	6'6" Panel x 5' Reverse Rad
AF	10	A-Frames
S	20	Stake
NB	60	Nuts & Bolts

CONCRETE DECK INFO

WIDTH	AREA	NET INCREASES FOR:			
		STEPS	DIVING	SLIDE	ROLLER
2'	140	13	27	24	10
2'6"	178	17	31	20	10
3'	219	20	36	16	10

All Figures Represent "Sq Ft"

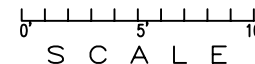


INSTALLATION DATA

From Point "A" to:-		From Point "B" to:-	
B	13'-1 1/4"	B	
C	11'-5 7/8"	C	10'-0"
D	6'-5 7/8"	D	9'-11 3/8"
E	6'-6"	E	13'-11 3/8"
F	14'-6 1/4"	F	5'-0"
G	11'-2 7/8"	G	5'-0"
SL	11'-5"	SL	5'-0"
SR	12'-9 1/4"	SR	5'-4 5/8"
DL	4'-10 7/8"	DL	9'-2 3/8"
DR	6'-4 1/4"	DR	9'-0 3/8"

NOTICE

SWIMMING POOLS AND ACCESSORIES (INCLUDING DIVING BOARDS) ARE DANGEROUS WHEN IMPROPERLY USED OR INSTALLED. IT IS THE RESPONSIBILITY OF MUNICIPAL OFFICIALS, BUILDERS AND POOL OWNERS TO ADHERE TO ALL SAFETY RECOMMENDATIONS AND STANDARDS ISSUED BY THE POOL & HOT TUB COUNCIL, LOCAL AUTHORITIES AND EQUIPMENT MANUFACTURERS. PLEASE REFER TO DIVING BOARD MANUFACTURERS FOR CORRECT POSITIONING AND INSTALLATION OF DIVING EQUIPMENT.



AQUAPRO

KIDNEY STRAIGHTBACK-LEFT 13 x 24'6 1/2"

DRAWING REFERENCE #  
16-13-24-1

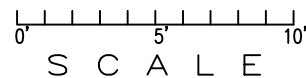
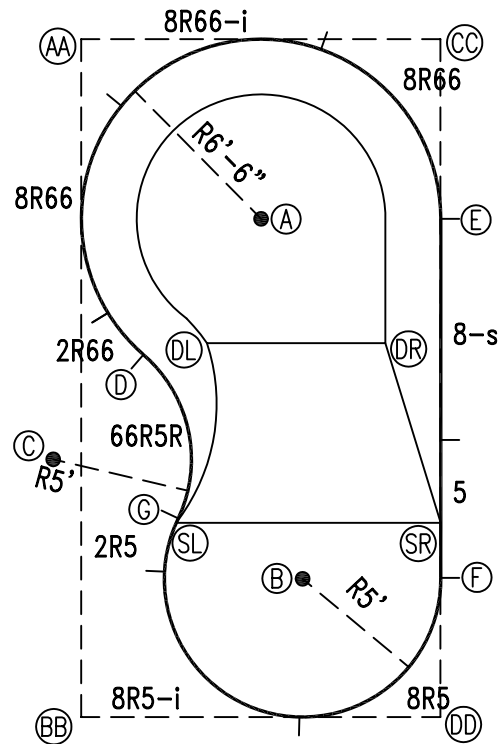
DRAWN BY: JB  
REV. 5 FEB 2007  
SHEET 1 OF 2

### EXTERNAL INSTALLATION DATA

AA TO:	BB TO:	CC TO:	DD TO:
AA ---	AA 24'-6 1/4"	AA 12'-11 7/8"	AA 27'-9"
BB ---	BB ---	BB 27'-9"	BB 12'-11 7/8"
CC ---	CC ---	CC ---	CC 24'-6 1/4"
A 9'-2 3/8"	A 19'-1 7/8"	A 9'-2 1/8"	A 19'-1 7/8"
B 21'-1 1/4"	B 9'-5 1/4"	B 20'-1 3/4"	B 7'-0 3/4"
C 15'-2 7/8"	C 9'-4 1/2"	C 20'-8"	C 16'-9 7/8"
D 11'-7 5/8"	D 13'-3 5/8"	D 15'-8 1/8"	D 16'-11 3/8"
E 23'-5 1/4"	E 13'-11 3/8"	E 19'-5 7/8"	E 5'-0 3/8"
F 17'-8 1/4"	F 8'-0"	F 19'-9 1/8"	F 11'-10 3/4"
G 2'-9 7/8"	G 22'-1 7/8"	G 11'-9 1/2"	G 24'-11 1/4"
H 14'-6 1/2"	H 22'-2 3/4"	H 6'-6"	H 18'-0 1/4"
SL 17'-9 7/8"	SL 7'-9 7/8"	SL 19'-11 1/4"	SL 11'-10 3/8"
SR 21'-9 5/8"	SR 14'-9 3/8"	SR 17'-5 7/8"	SR 7'-0 1/4"
DL 11'-10 7/8"	DL 14'-3 1/4"	DL 13'-10 3/8"	DL 15'-11 1/4"
DR 15'-6 3/4"	DR 17'-5 1/4"	DR 11'-2 1/8"	DR 13'-8"

### DIAGONALS

D To F:	13'5"
G To E:	13'11"



### NOTICE

SWIMMING POOLS AND ACCESSORIES (INCLUDING DIVING BOARDS) ARE DANGEROUS WHEN IMPROPERLY USED OR INSTALLED. IT IS THE RESPONSIBILITY OF MUNICIPAL OFFICIALS, BUILDERS AND POOL OWNERS TO ADHERE TO ALL SAFETY RECOMMENDATIONS AND STANDARDS ISSUED BY THE POOL & HOT TUB COUNCIL, LOCAL AUTHORITIES AND EQUIPMENT MANUFACTURERS. PLEASE REFER TO DIVING BOARD MANUFACTURERS FOR CORRECT POSITIONING AND INSTALLATION OF DIVING EQUIPMENT.

**AQUAPRO**

KIDNEY STRAIGHTBACK-LEFT 13 x 24'6 1/2"

DRAWING REFERENCE #  
16-13-24-1

DRAWN BY: JB  
REV. 5 FEB 2007  
SHEET 2 OF 2