

MISCELLANEOUS INFORMATION

PERIMETER:-	77'-6"
SURFACE AREA:	371.0 SQ FT
VOLUME:	11,541 IMP GAL 52,513 L

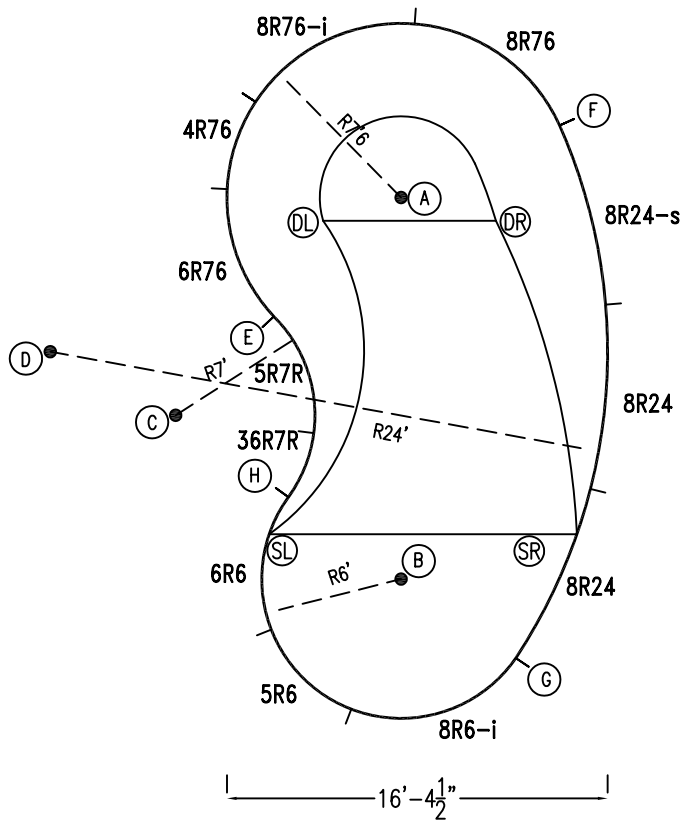
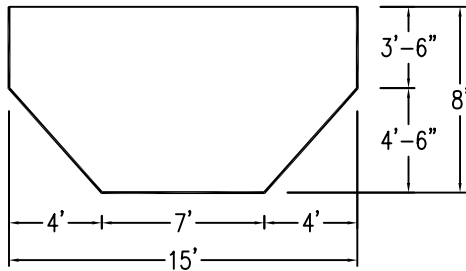
PARTS LIST

CODE	QTY	DESCRIPTION
8R24-s	1	8' Skimmer x 24' Radius
8R76-i	1	8' Return x 7'6 Radius
8R6-i	1	8' Return x 6' Radius
8R24	2	8' Plain x 24' Radius
8R76	1	8' Plain x 7'6 Radius
6R76	1	6' Plain x 7'6 Radius
4R76	1	4' Plain x 7'6 Radius
6R6	1	6' Plain x 6' Radius
5R6	1	5' Plain x 6' Radius
5R7R	1	5' Plain x 7' Reverse Radius
36R7R	1	3'6 Plain x 7' Reverse Radius
AF	12	A-Frame
S	24	Stake
NB	70	Nuts & Bolts

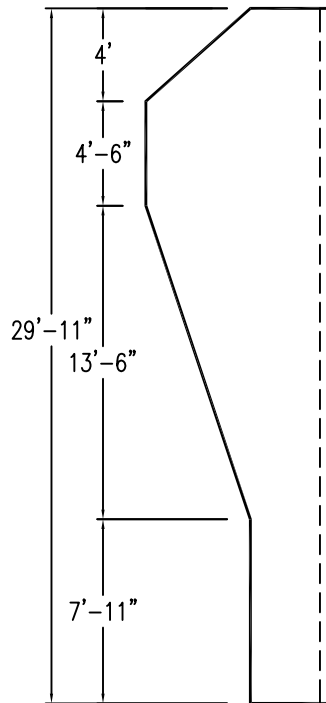
CONCRETE DECK INFO

WIDTH	AREA	NET INCREASES FOR:			
		STEPS	DIVING	SLIDE	ROLLER
2'	168	13	27	24	10
2'6"	213	17	31	20	10
3'	260	20	36	16	10

All Figures Represent "Sq Ft"



6" WATER LINE - I I -



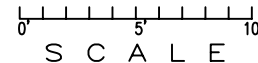
*ALL DIMENSIONS ARE FINISHED

INSTALLATION DATA

From Point "A" to:-		From Point "B" to:-	
B	16'-5 1/8"	B	
C	13'-5 7/8"	C	12'-0"
D	16'-6"	D	18'-0"
E	7'-6"	E	12'-6 3/4"
F	7'-6"	F	20'-8 1/4"
G	20'-5 1/4"	G	6'-0"
H	13'-9 3/8"	H	6'-0"
SL	15'-6 7/8"	SL	6'-0"
SR	16'-4 1/4"	SR	7'-9 3/4"
DL	3'-5 7/8"	DL	15'-9 1/2"
DR	4'-2 1/2"	DR	15'-11 1/2"

NOTICE

SWIMMING POOLS AND ACCESSORIES (INCLUDING DIVING BOARDS) ARE DANGEROUS WHEN IMPROPERLY USED OR INSTALLED. IT IS THE RESPONSIBILITY OF MUNICIPAL OFFICIALS, BUILDERS AND POOL OWNERS TO ADHERE TO ALL SAFETY RECOMMENDATIONS AND STANDARDS ISSUED BY THE POOL & HOT TUB COUNCIL, LOCAL AUTHORITIES AND EQUIPMENT MANUFACTURERS. PLEASE REFER TO DIVING BOARD MANUFACTURERS FOR CORRECT POSITIONING AND INSTALLATION OF DIVING EQUIPMENT.



AQUAPRO

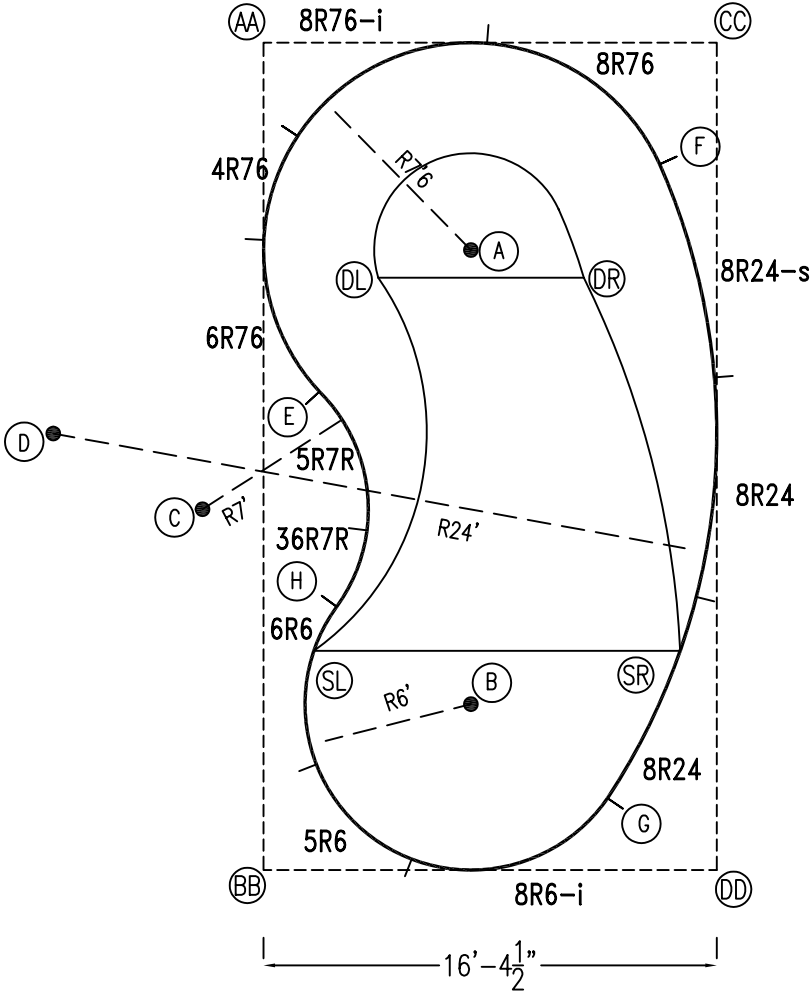
KIDNEY - LEFT 15 x 16'5 x 29'11

DRAWING REFERENCE #
15-15-30-1

DRAWN BY: BKJ
REV. 19 FEB 2007
SHEET 1 OF 2

EXTERNAL INSTALLATION DATA

AA TO:	BB TO:	CC TO:	DD TO:
AA ---	AA 29'-11 1/8"	AA 16'-4 3/4"	AA 34'-1 1/2"
BB ---	BB ---	BB 34'-1 1/2"	BB 16'-4 3/4"
CC ---	CC ---	CC ---	CC 29'-11 1/8"
A 10'-7 1/4"	A 23'-7 3/4"	A 11'-7 5/8"	A 24'-1 1/2"
B 25'-0 7/8"	B 9'-7 1/4"	B 25'-6 3/8"	B 10'-8 3/4"
C 17'-0 1/4"	C 13'-2 7/8"	C 25'-1 3/8"	C 22'-8 3/4"
D 16'-0 5/8"	D 17'-6 3/8"	D 27'-10 1/4"	D 28'-8 3/4"
E 12'-9 3/8"	E 17'-5 1/8"	E 19'-1 1/2"	E 22'-5 7/8"
F 14'-11 7/8"	F 29'-3 3/8"	F 4'-10 1/4"	F 25'-7 3/8"
G 30'-0 3/8"	G 12'-8 1/2"	G 27'-7 3/8"	G 4'-8 3/4"
H 20'-6 7/8"	H 9'-10 5/8"	H 24'-7 1/4"	H 16'-8 3/4"
SL 22'-0 7/8"	SL 8'-1 5/8"	SL 26'-4 5/8"	SL 16'-7 1/8"
SR 26'-7 7/8"	SR 17'-0 3/8"	SR 22'-0 1/2"	SR 8'-0 1/2"
DL 9'-5 1/2"	DL 21'-9 7/8"	DL 14'-10 7/8"	DL 24'-8 1/8"
DR 14'-4 3/8"	DR 24'-4 1/4"	DR 9'-9 1/4"	DR 21'-11 1/2"



DIAGONALS

F To H:	19'-9 3/4"
E To G:	18'-0 3/8"



NOTICE

SWIMMING POOLS AND ACCESSORIES (INCLUDING DIVING BOARDS) ARE DANGEROUS WHEN IMPROPERLY USED OR INSTALLED. IT IS THE RESPONSIBILITY OF MUNICIPAL OFFICIALS, BUILDERS AND POOL OWNERS TO ADHERE TO ALL SAFETY RECOMMENDATIONS AND STANDARDS ISSUED BY THE POOL & HOT TUB COUNCIL, LOCAL AUTHORITIES AND EQUIPMENT MANUFACTURERS. PLEASE REFER TO DIVING BOARD MANUFACTURERS FOR CORRECT POSITIONING AND INSTALLATION OF DIVING EQUIPMENT.

AQUAPRO

KIDNEY-LEFT 15x16'5x29'11

DRAWING REFERENCE #
15-15-30-1

DRAWN BY: BKJ
REV. 19 FEB 07
SHEET 2 OF 2