

MISCELLANEOUS INFORMATION

PERIMETER:—	90'
SURFACE AREA:	505.1 SQ FT
VOLUME:	14895 IMP GALS 67771 L

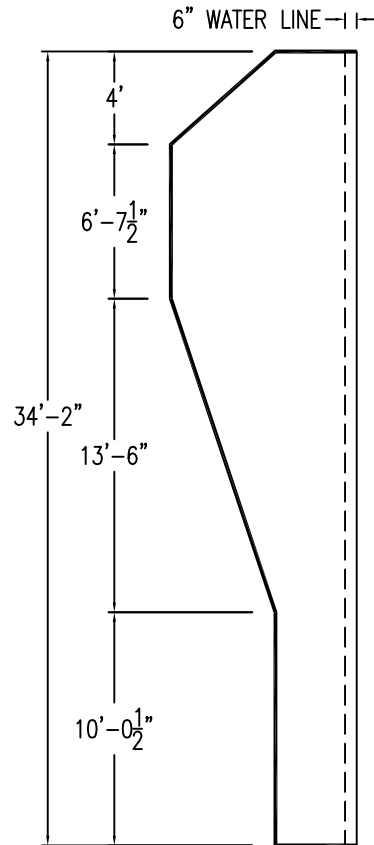
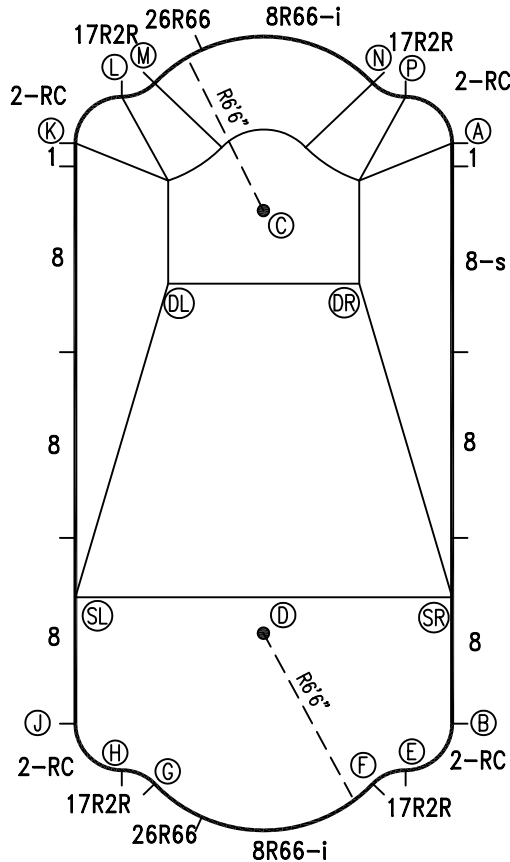
PARTS LIST

CODE	QTY	DESCRIPTION
8R66-i	2	8' Return x 6'6" Radius
26R66	2	2'6" Plain x 6'6" Rad
2RC	4	3'2" Plain x 2' Rad
17R2R	4	1'7" Plain x 2' Reverse Rad
8-s	1	8' Skimmer
8	5	8' Plain
1	2	1' Plain
AF	20	A-Frames
S	40	Stakes
NB	120	Nuts & Bolts

CONCRETE DECK INFO

WIDTH	AREA	NET INCREASES FOR:			
		STEPS	DIVING	SLIDE	ROLLER
2'	192	13	27	24	10
2'6"	244	17	31	20	10
3'	298	20	36	16	10

All Figures Represent "Sq Ft"



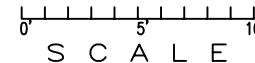
INSTALLATION DATA

From Point "A" to:-		From Point "B" to:-	
B	25'-0"	B	
C	8'-7 1/2"	C	23'-6 5/8"
D	22'-7 3/8"	D	9'-0 1/8"
E	27'-0 7/8"	E	2'-9 7/8"
F	27'-9 1/2"	F	4'-3 3/8"
G	30'-4 7/8"	G	13'-0 7/8"
H	30'-6 1/4"	H	14'-4 3/8"
J	29'-9 5/8"	J	16'-2 3/4"
K	16'-2 3/4"	K	29'-9 5/8"
L	14'-4 3/8"	L	30'-6 1/4"
M	13'-0 7/8"	M	30'-4 7/8"
N	4'-3 3/8"	N	27'-9 1/2"
P	2'-9 7/8"	P	27'-0 7/8"
SL	25'-4 7/8"	SL	17'-1 3/8"
SR	19'-6 5/8"	SR	5'-5 3/8"
DL	13'-7 5/8"	DL	22'-6 5/8"
DR	7'-3"	DR	19'-4 3/8"

NOTICE

SWIMMING POOLS AND ACCESSORIES (INCLUDING DIVING BOARDS) ARE DANGEROUS WHEN IMPROPERLY USED OR INSTALLED. IT IS THE RESPONSIBILITY OF MUNICIPAL OFFICIALS, BUILDERS AND POOL OWNERS TO ADHERE TO ALL SAFETY RECOMMENDATIONS AND STANDARDS ISSUED BY THE POOL & HOT TUB COUNCIL, LOCAL AUTHORITIES AND EQUIPMENT MANUFACTURERS. PLEASE REFER TO DIVING BOARD MANUFACTURERS FOR CORRECT POSITIONING AND INSTALLATION OF DIVING EQUIPMENT.

*ALL DIMENSIONS ARE FINISHED



AQUAPRO

ROMAN

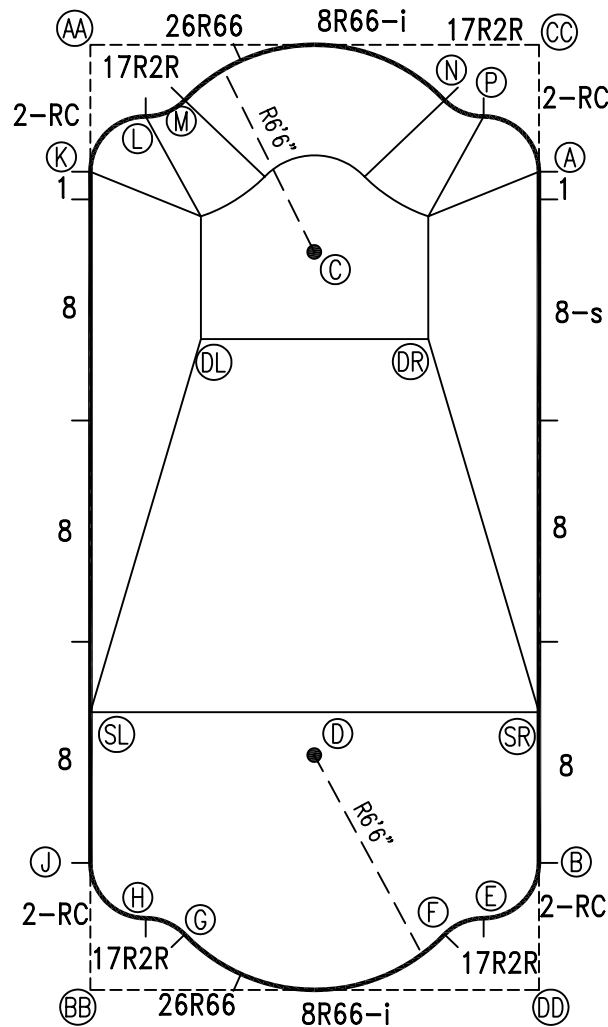
16 x 34

DRAWING REFERENCE #
75-16-34-1

DRAWN BY: BC
REV. 14 FEB 2007
SHEET 1 OF 2

EXTERNAL INSTALLATION DATA

AA TO:	BB TO:	CC TO:	DD TO:
AA ---	AA 34'-2 1/4"	AA 16'-2 3/4"	AA 37'-10 1/8"
BB ---	BB ---	BB 37'-10 1/8"	BB 16'-2 3/4"
CC ---	CC ---	CC ---	CC 34'-2 1/4"
A 16'-10 3/8"	A 33'-8 7/8"	A 4'-7 1/8"	A 29'-7 1/8"
B 33'-8 7/8"	B 16'-10 3/8"	B 29'-7 1/8"	B 4'-7 1/8"
C 11'-0 3/8"	C 27'-10 3/4"	C 11'-0 5/8"	C 27'-10 7/8"
D 26'-11 1/4"	D 11'-8 7/8"	D 26'-11 3/8"	D 11'-9"
E 34'-7 3/4"	E 14'-5 1/2"	E 31'-7 7/8"	E 3'-3 1/4"
F 34'-7 5/8"	F 12'-11 5/8"	F 32'-4 3/8"	F 3'-11 1/2"
G 32'-4 3/8"	G 3'-11 1/2"	G 34'-7 5/8"	G 12'-11 5/8"
H 31'-7 7/8"	H 3'-3 1/4"	H 34'-7 3/4"	H 14'-5 1/2"
J 29'-7 1/8"	J 4'-7 1/8"	J 33'-8 7/8"	J 16'-10 3/8"
K 4'-7 1/8"	K 29'-7 1/8"	K 16'-10 3/8"	K 33'-8 7/8"
L 3'-3 1/4"	L 31'-7 7/8"	L 14'-5 1/2"	L 34'-7 3/4"
M 3'-11 1/2"	M 32'-4 3/8"	M 12'-11 5/8"	M 34'-7 5/8"
N 12'-11 5/8"	N 34'-7 5/8"	N 3'-11 1/2"	N 32'-4 3/8"
P 14'-5 1/2"	P 34'-7 3/4"	P 3'-3 1/4"	P 31'-7 7/8"
SL 24'-1 3/4"	SL 10'-0 1/2"	SL 29'-1 1/8"	SL 19'-0 7/8"
SR 29'-1 1/8"	SR 19'-0 7/8"	SR 24'-1 3/4"	SR 10'-0 1/2"
DL 11'-4 1/2"	DL 23'-10 1/2"	DL 16'-2 1/2"	DL 26'-6 3/8"
DR 16'-2 1/2"	DR 26'-6 3/8"	DR 11'-4 1/2"	DR 23'-10 1/2"



0' 5' 10'
S C A L E

NOTICE

SWIMMING POOLS AND ACCESSORIES (INCLUDING DIVING BOARDS) ARE DANGEROUS WHEN IMPROPERLY USED OR INSTALLED. IT IS THE RESPONSIBILITY OF MUNICIPAL OFFICIALS, BUILDERS AND POOL OWNERS TO ADHERE TO ALL SAFETY RECOMMENDATIONS AND STANDARDS ISSUED BY THE POOL & HOT TUB COUNCIL, LOCAL AUTHORITIES AND EQUIPMENT MANUFACTURERS. PLEASE REFER TO DIVING BOARD MANUFACTURERS FOR CORRECT POSITIONING AND INSTALLATION OF DIVING EQUIPMENT.

AQUAPRO

ROMAN

16 x 34

DRAWING REFERENCE #
75-16-34-1

DRAWN BY: BC
REV. 14 FEB 2007
SHEET 2 OF 2