

MISCELLANEOUS INFORMATION

PERIMETER:-	82'
SURFACE AREA:	440 SQ FT
VOLUME:	13463 IMP GALS 61258 L

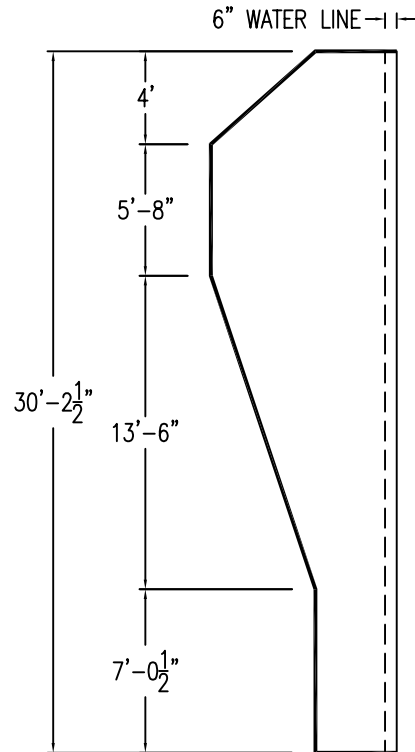
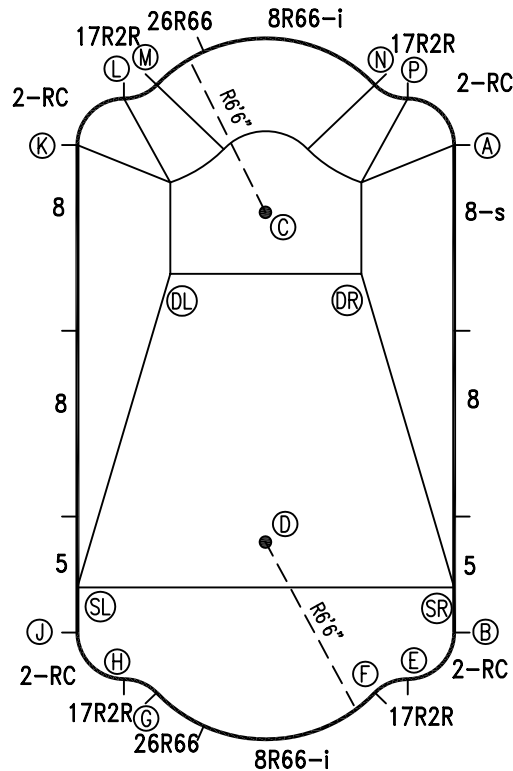
CONCRETE DECK INFO

WIDTH	AREA	NET INCREASES FOR:			
		STEPS	DIVING	SLIDE	ROLLER
2'	179	13	27	24	10
2'6"	228	17	31	20	10
3'	278	20	36	16	10

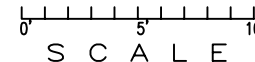
All Figures Represent "Sq Ft"

PARTS LIST

CODE	QTY	DESCRIPTION
8R66-i	2	8' Return x 6'6" Radius
26R66	2	2'6" Plain x 6'6" Rad
2RC	4	3'2" Plain x 2' Rad
17R2R	4	1'7" Plain x 2' Reverse Rad
8-s	1	8' Skimmer
8	3	8' Plain
5	2	5' Plain
AF	18	A-Frames
S	36	Stakes
NB	108	Nuts & Bolts



*ALL DIMENSIONS ARE FINISHED



INSTALLATION DATA

From Point "A" to:-		From Point "B" to:-	
B	21'-0"	B	19'-10 1/8"
C	8'-7 1/2"	C	9'-0 1/8"
D	18'-11 1/8"	D	2'-9 7/8"
E	23'-1"	E	4'-3 3/8"
F	23'-9 7/8"	F	13'-0 7/8"
G	26'-10 1/8"	G	14'-4 3/8"
H	27'-0 1/2"	H	16'-2 3/4"
J	26'-6 1/2"	J	26'-6 1/2"
K	16'-2 3/4"	K	27'-0 1/2"
L	14'-4 3/8"	L	26'-10 1/8"
M	13'-0 7/8"	M	23'-9 7/8"
N	4'-3 3/8"	N	23'-1"
P	2'-9 7/8"	P	16'-4 1/8"
SL	25'-0 1/4"	SR	1'-11 3/8"
SR	19'-0 5/8"	DL	19'-8 3/8"
DL	13'-5 1/8"	DR	15'-11 1/2"
DR	6'-10 1/8"		

NOTICE

SWIMMING POOLS AND ACCESSORIES (INCLUDING DIVING BOARDS) ARE DANGEROUS WHEN IMPROPERLY USED OR INSTALLED. IT IS THE RESPONSIBILITY OF MUNICIPAL OFFICIALS, BUILDERS AND POOL OWNERS TO ADHERE TO ALL SAFETY RECOMMENDATIONS AND STANDARDS ISSUED BY THE POOL & HOT TUB COUNCIL, LOCAL AUTHORITIES AND EQUIPMENT MANUFACTURERS. PLEASE REFER TO DIVING BOARD MANUFACTURERS FOR CORRECT POSITIONING AND INSTALLATION OF DIVING EQUIPMENT.

AQUAPRO

ROMAN

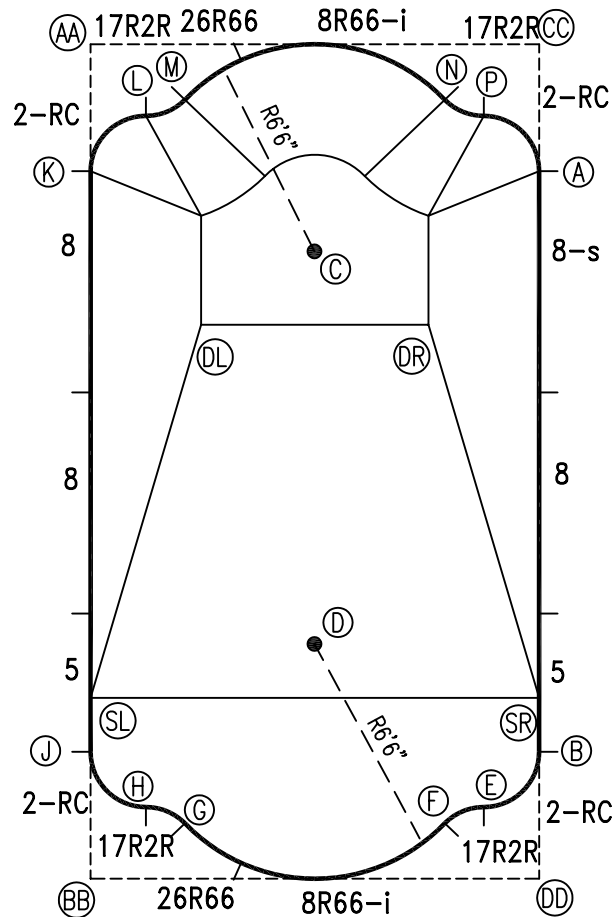
16 x 30

DRAWING REFERENCE #
75-16-30-1

DRAWN BY: BC
REV. 06 FEB 2007
SHEET 1 OF 2

EXTERNAL INSTALLATION DATA

AA TO:	BB TO:	CC TO:	DD TO:
AA ---	AA 30'-2 1/4"	AA 16'-2 3/4"	AA 34'-3 1/4"
BB ---	BB ---	BB 34'-3 1/4"	BB 16'-2 3/4"
CC ---	CC ---	CC ---	CC 30'-2 1/4"
A 16'-10 3/8"	A 30'-3 5/8"	A 4'-7 1/8"	A 25'-7 1/8"
B 30'-3 5/8"	B 16'-10 3/8"	B 25'-7 1/8"	B 4'-7 1/8"
C 11'-0 3/8"	C 24'-1 1/8"	C 11'-0 5/8"	C 24'-1 1/4"
D 23'-1 7/8"	D 11'-8 7/8"	D 23'-1 7/8"	D 11'-9 1/8"
E 31'-0 1/2"	E 14'-5 1/2"	E 27'-7 7/8"	E 3'-3 1/4"
F 30'-11 1/2"	F 12'-11 5/8"	F 28'-4 5/8"	F 3'-11 1/2"
G 28'-4 5/8"	G 3'-11 1/2"	G 30'-11 1/2"	G 12'-11 5/8"
H 27'-7 7/8"	H 3'-3 1/4"	H 31'-0 1/2"	H 14'-5 1/2"
J 25'-7 1/8"	J 4'-7 1/8"	J 30'-3 5/8"	J 16'-10 3/8"
K 4'-7 1/8"	K 25'-7 1/8"	K 16'-10 3/8"	K 30'-3 5/8"
L 3'-3 1/4"	L 27'-7 7/8"	L 14'-5 1/2"	L 31'-0 1/2"
M 3'-11 1/2"	M 28'-4 5/8"	M 12'-11 5/8"	M 30'-11 1/2"
N 12'-11 5/8"	N 30'-11 1/2"	N 3'-11 1/2"	N 28'-4 5/8"
P 14'-5 1/2"	P 31'-0 1/2"	P 3'-3 1/4"	P 27'-7 7/8"
SL 23'-7 3/4"	SL 6'-6 1/2"	SL 28'-8 1/8"	SL 17'-5 7/8"
SR 28'-8 1/8"	SR 17'-5 7/8"	SR 23'-7 3/4"	SR 6'-6 1/2"
DL 10'-10 7/8"	DL 20'-5 1/4"	DL 15'-10 5/8"	DL 23'-5 3/4"
DR 15'-10 5/8"	DR 23'-5 3/4"	DR 10'-10 7/8"	DR 20'-5 1/4"



0' 5' 10'
SCALE

NOTICE

SWIMMING POOLS AND ACCESSORIES (INCLUDING DIVING BOARDS) ARE DANGEROUS WHEN IMPROPERLY USED OR INSTALLED. IT IS THE RESPONSIBILITY OF MUNICIPAL OFFICIALS, BUILDERS AND POOL OWNERS TO ADHERE TO ALL SAFETY RECOMMENDATIONS AND STANDARDS ISSUED BY THE POOL & HOT TUB COUNCIL, LOCAL AUTHORITIES AND EQUIPMENT MANUFACTURERS. PLEASE REFER TO DIVING BOARD MANUFACTURERS FOR CORRECT POSITIONING AND INSTALLATION OF DIVING EQUIPMENT.

AQUAPRO

ROMAN

16 x 30

DRAWING REFERENCE #
75-16-30-1

DRAWN BY: BC
REV. 06 FEB 2007
SHEET 2 OF 2